

The logo for 'Tour De Bloom' is located in the top left corner. It features the word 'Tour' in a light blue, cursive font, with a green lightning bolt graphic striking through it. Below 'Tour' is the word 'De' in a smaller, light blue font, and 'Bloom' is written in a larger, light blue, cursive font. The background of the entire image is a photograph of a road cycling race taking place on a paved road that winds through a dense forest of tall, green pine trees. In the distance, a mountain range is visible under a clear sky. The cyclists are seen from behind, riding away from the viewer. Several support vehicles, including a white van and a black car, are visible in the lower right corner of the frame.

**Tour
De Bloom**

Results Stage: 2

Still Properties Waterville Road Race

Elite Women P/1/2/3



Elite

Communiqué #3

15 May 2026

Jerseys: The following will wear the Leaders Jerseys for Stage 3:

Elite Men

General Classification	43	HAMPTON Cameron	Kelly Benefit Strategies
Points Classification	51	HOGMAN Samuel	Red Kilo
Mountains Classification	43	HAMPTON Cameron	Kelly Benefit Strategies
<i>Jersey worn by</i>	48	<i>STOKES Ben</i>	<i>Kelly Benefit Strategies</i>
Best Young Rider	43	HAMPTON Cameron	Kelly Benefit Strategies
<i>Jersey worn by</i>	64	<i>MOORE Manu</i>	<i>Red truck Racing</i>

Elite Women

General Classification	204	ARLANDSON Grace	Aegis x Leaders of Enchantment
Points Classification	211	MEJIAS GARCIA Marlies	Virginia's Blue Ridge TWENTY28
Mountains Classification	214	HICKS Anna	Virginia's Blue Ridge TWENTY28
Best Young Rider	215	SABO Ella	Virginia's Blue Ridge TWENTY28

The following penalties were assessed after Stage 2

8B5(c) Littering				
Mike's Bikes	105	KING Trevor	458866	\$100
8A1(n) Number invisible, badly positioned or covered at finish				
Red Truck Racing p/b Mosaic Homes	64	MOORE Manu	10059702672	\$30
TaG Cycling Race Team	97	MCMULLEN Jayden	10100487435	\$30
8A5(a) Failure to respect instructions of commissaires or race administration				
Cascadia	23	HSU Johnathan	591106	\$100



**Elite Race
Communiqué #2
14 May 2026**

Correction: Team Car Caravan Order

Men Elite

Order	Team
1	Kelly Benefits Cycling
2	SpeedBlock-Terún Elite
3	Cascadia
4	Red Truck Racing p/b Mosaic Homes
5	Project Echelon
6	Team Mike's Bike pb Equator Coffees
7	TaG Cycling Race Team
8	REG
9	Chalet Colorado Racing
10	UBC Cycling Team
11	YBA Racing
12	Seattle United
13	Red Kilo



Elite Race
Communiqué #2
14 May 2026

Women Elite

Order	Team
1	Virginia's Blue Ridge TWENTY28
2	Aegis x Leaders of Enchantment
3	Valkyr Cycling
4	SpeedBlock-Terún Elite
5	Monarch Racing
6	Team S&M CX
7	Analog Racing Team
8	CCB Kenetik p/b Levine Law Group
9	SOUTH
10	TaG Cycling Race Team
11	The Cyclery Racing
12	BCID
13	Red Truck Racing p/b Mosaic Homes

2026 Tour De Bloom Stage: 2

Still Properties Waterville Road Race

May 15, 2026

Honors

Stage Distance: 121.3 km

STAGE

STAGE WINNER

14 MEJIAS GARCIA, Marlies Virginia's Blue Ridge TWENTY28

BEST TEAM

Virginia's Blue Ridge TWENTY28

GENERAL CLASSIFICATION

GENERAL CLASSIFICATION

204 ARLANDSON, Grace Aegis x Leaders of Enchantment

SPRINT CLASSIFICATION

211 MEJIAS GARCIA, Marlies Virginia's Blue Ridge TWENTY28

MOUNTAINS CLASSIFICATION

214 HICKS, Anna Virginia's Blue Ridge TWENTY28

YOUNG RIDER CLASSIFICATION

292 BAKER, Dylan* The Cyclery Racing

TEAM GENERAL CLASSIFICATION

Virginia's Blue Ridge TWENTY28

JERSEY

GENERAL CLASSIFICATION

204 ARLANDSON, Grace Aegis x Leaders of Enchantment



SPRINT CLASSIFICATION

211 MEJIAS GARCIA, Marlies Virginia's Blue Ridge TWENTY28



MOUNTAINS CLASSIFICATION

214 HICKS, Anna Virginia's Blue Ridge TWENTY28



YOUNG RIDER CLASSIFICATION

292 BAKER, Dylan* The Cyclery Racing



2026 Tour De Bloom Stage: 2

Still Properties Waterville Road Race

May 15, 2026

Stage Results

Stage Distance: 121.3 km
Time of the Winner: 3:27:35
Average: 35.059 kph

Rank	Bib	Name	Team	B	P	Gap	Rank	Bib	Name	Team	B	P	Gap
1	211	MEJIAS GARCIA, Marlies	Virginia's Blue Ridge TWENTY28	16	--		60	225	TROYER, Pamela	Analog Racing Team			+34:54
2	216	CUMMINS, Olivia	Virginia's Blue Ridge TWENTY28	8	"		61	273	MONTRICHARD, Vanessa*	TaG Cycling Race Team			"
3	215	SABO, Ella*	Virginia's Blue Ridge TWENTY28	4	"		62	202	BAKER, Ajay	Aegis x Leaders of Enchantment			"
4	212	EHRLICH, Emily	Virginia's Blue Ridge TWENTY28		"		63	243	GIESKE, Meredith	Monarch Racing			+43:07
5	204	ARLANDSON, Grace	Aegis x Leaders of Enchantment			+06	64	251	DRESSLER, Emma	Red Truck Racing p/b Mosaic			+44:51
6	264	PAYER, Kira	SpeedBlock-Terún Elite			"	DNF	172	PETERSEN, Jen	BCID			
7	203	CHAPMAN, Jamie	Aegis x Leaders of Enchantment			"	DNS	174	YOUMANS, Sara	BCID			
8	292	BAKER, Dylan*	The Cyclery Racing			+17	DNS	206	RHYNE, Kate	Aegis x Leaders of Enchantment			
9	236	SONNEMANN, Lyllie*	CCB Kenetik p/b Levine Law	4		+3:28							
10	205	LAWSON, Mairén	Aegis x Leaders of Enchantment			"							
11	181	HOWDEN, Florence	SOUTH			"							
12	272	FORTIER, Abigael*	TaG Cycling Race Team			+5:44							
13	262	LAFHAMME, Camille	SpeedBlock-Terún Elite			"			Did Not Finish: 1				
14	266	SNOVER, Ellexi	SpeedBlock-Terún Elite			"			Did Not Start: 2				
15	271	ERVIN-ARAMBARRI,	TaG Cycling Race Team			"							
16	284	MUSGRAVE, Kaya*	Team S&M CX			"							
17	193	KIKAWA, Caroline	Valkyr Cycling			"							
18	175	BEEBE, Tessa*	BCID			"							
19	252	AYROUD, Kathryn	Red Truck Racing p/b Mosaic			"							
20	185	SIMS, Sierra	SOUTH			"							
21	213	GILBERT, Emmi	Virginia's Blue Ridge TWENTY28			"							
22	214	HICKS, Anna	Virginia's Blue Ridge TWENTY28			"							
23	295	SCOTT, Annie	The Cyclery Racing			"							
24	265	PELLERIN, Skye	SpeedBlock-Terún Elite			"							
25	232	EDWARDS, Lily*	CCB Kenetik p/b Levine Law			"							
26	261	AGGELER, Lauren*	SpeedBlock-Terún Elite			"							
27	183	REEVE, Olivia	SOUTH			"							
28	191	BIRD, Sara	Valkyr Cycling			"							
29	274	WINCHELL, Eleanor*	TaG Cycling Race Team			"							
30	282	BETUEL, Emma	Team S&M CX			"							
31	231	BRENNEMAN, Ella*	CCB Kenetik p/b Levine Law			"							
32	201	HANEL, Kylee*	Aegis x Leaders of Enchantment			"							
33	263	MINAGAWA, Minori	SpeedBlock-Terún Elite			"							
34	223	MITCHELL, Charlotte	Analog Racing Team			"							
35	245	MERK, Helena	Monarch Racing			"							
36	241	GILBERT, Annie	Monarch Racing			"							
37	293	DRIEDGER, Emily	The Cyclery Racing			"							
38	173	KENNEDY, Shannon	BCID			"							
39	224	PHAM, Cynthia	Analog Racing Team			"							
40	244	LUO, Elisa	Monarch Racing			"							
41	255	THACKRAY, Sarah	Red Truck Racing p/b Mosaic			+5:55							
42	253	BARRACLOUGH, Ngairé	Red Truck Racing p/b Mosaic			+10:07							
43	256	THOMSON, Ashton*	Red Truck Racing p/b Mosaic			"							
44	171	WARD, Jennifer	BCID			+10:58							
45	285	SACCIO, Zoe	Team S&M CX			+11:21							
46	222	GELINEAU, Sophie	Analog Racing Team			+12:25							
47	182	HALAMEK, Stephanie	SOUTH			"							
48	242	FERREIRA, Claudia	Monarch Racing			"							
49	233	GRIER, Ella*	CCB Kenetik p/b Levine Law			"							
50	234	HAYES, Sabrina	CCB Kenetik p/b Levine Law			"							
51	221	LYND, Mikayla	Analog Racing Team			"							
52	246	NOTTINGHAM, Grace	Monarch Racing			+13:07							
53	194	LOVELL, Marissa	Valkyr Cycling			+18:51							
54	281	WRYE-SIMPSON, Brenna	Team S&M CX			+26:36							
55	283	LUCIE, Kimberly	Team S&M CX			"							
56	296	FANGEAT, Alex*	The Cyclery Racing			+30:22							
57	291	TAYLOR, Kristen*	The Cyclery Racing			+32:11							
58	192	ALBRIGHT, Bristol*	Valkyr Cycling			+32:47							
59	195	MOSER, Natalie*	Valkyr Cycling			+33:47							

2026 Tour De Bloom Stage: 2

Still Properties Waterville Road Race

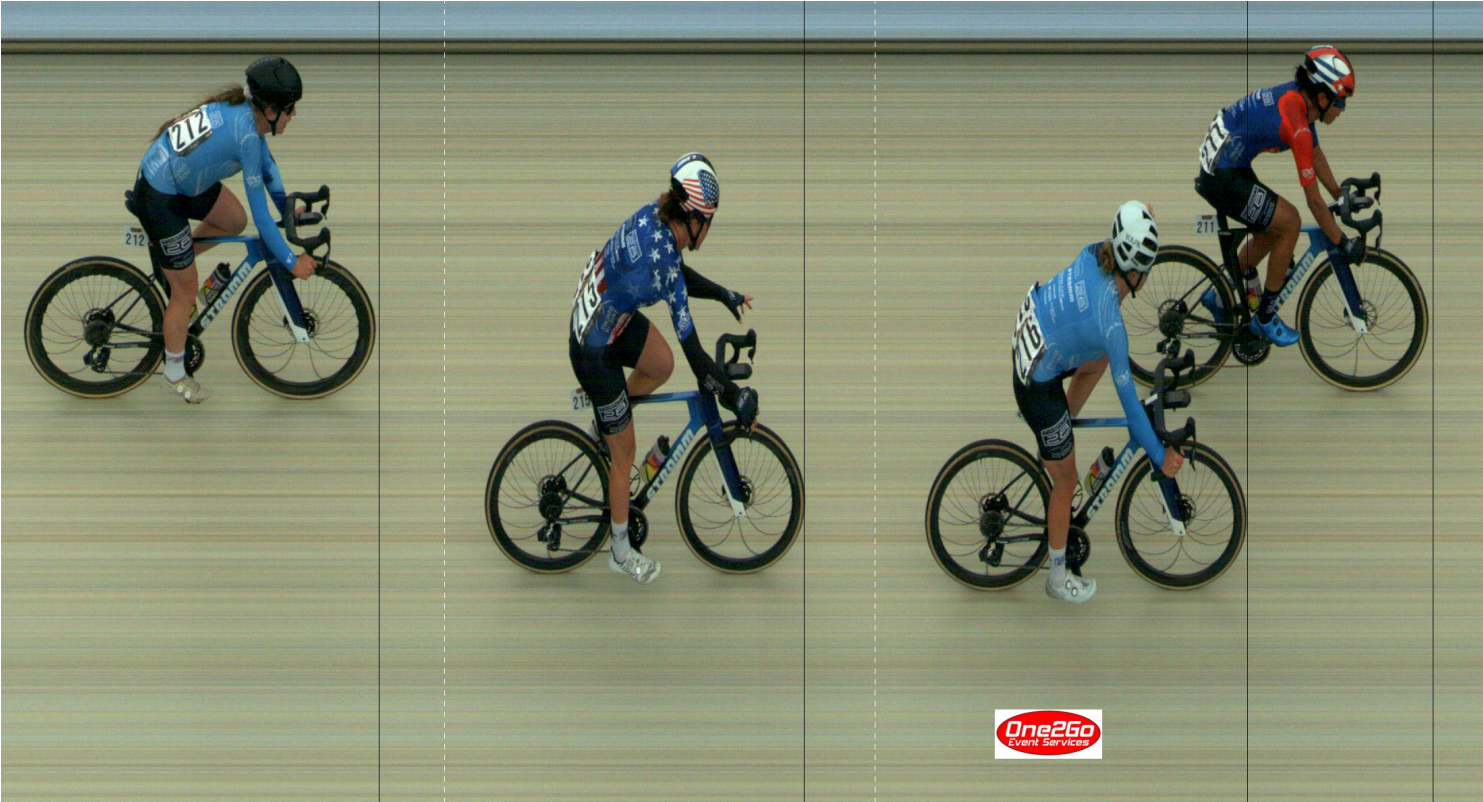
May 15, 2026

Photo Finish

Winner

Marlies MEJIAS GARCIA, Number 211

Virginia's Blue Ridge TWENTY28



2026 Tour De Bloom Stage: 2

Still Properties Waterville Road Race

May 15, 2026

Cumulative Distance: 137.9 km

Time of the Leader: 3:51:07

Average: 35.800 kph

General Classification

Rank	Bib	Name	Team	Time	Gap	Rank	Bib	Name	Team	Time	Gap
1	204	ARLANDSON, Grace	Aegis x Leaders of Enchantment	3:51:07	--	60	225	TROYER, Pamela	Analog Racing Team	4:33:24	+42:17
2	211	MEJIAS GARCIA, Marlies	Virginia's Blue Ridge TWENTY28	3:51:20	+13	61	273	MONTRICHARD, Vanessa*	TaG Cycling Race Team	4:34:35	+43:28
3	203	CHAPMAN, Jamie	Aegis x Leaders of Enchantment	3:51:20	"	62	243	GIESKE, Meredith	Monarch Racing	4:34:44	+43:37
4	264	PAYER, Kira	SpeedBlock-Terún Elite	3:51:43	+36	63	202	BAKER, Ajay	Aegis x Leaders of Enchantment	4:35:30	+44:23
5	212	EHRlich, Emily	Virginia's Blue Ridge TWENTY28	3:52:47	+1:40	64	251	DRESSLER, Emma	Red Truck Racing p/b Mosaic	4:46:29	+55:22
6	292	BAKER, Dylan*	The Cyclery Racing	3:53:20	+2:13						
7	216	CUMMINS, Olivia	Virginia's Blue Ridge TWENTY28	3:53:23	+2:16						
8	215	SABO, Ella*	Virginia's Blue Ridge TWENTY28	3:54:46	+3:39						
9	213	GILBERT, Emmi	Virginia's Blue Ridge TWENTY28	3:55:58	+4:51						
10	214	HICKS, Anna	Virginia's Blue Ridge TWENTY28	3:56:17	+5:10						
11	201	HANEL, Kylee*	Aegis x Leaders of Enchantment	3:56:40	+5:33						
12	282	BETUEL, Emma	Team S&M CX	3:57:23	+6:16						
13	205	LAWSON, Mairén	Aegis x Leaders of Enchantment	3:57:25	+6:18						
14	224	PHAM, Cynthia	Analog Racing Team	3:57:25	"						
15	232	EDWARDS, Lily*	CCB Kenetik p/b Levine Law	3:57:27	+6:20						
16	183	REEVE, Olivia	SOUTH	3:57:55	+6:48						
17	263	MINAGAWA, Minori	SpeedBlock-Terún Elite	3:57:55	"						
18	181	HOWDEN, Florence	SOUTH	3:57:58	+6:51						
19	274	WINCHELL, Eleanor*	TaG Cycling Race Team	3:58:25	+7:18						
20	265	PELLERIN, Skye	SpeedBlock-Terún Elite	3:58:27	+7:20						
21	266	SNOVER, Ellexi	SpeedBlock-Terún Elite	3:58:50	+7:43						
22	271	ERVIN-ARAMBARRI,	TaG Cycling Race Team	3:58:57	+7:50						
23	295	SCOTT, Annie	The Cyclery Racing	3:59:00	+7:53						
24	261	AGGELER, Lauren*	SpeedBlock-Terún Elite	3:59:07	+8:00						
25	231	BRENNEMAN, Ella*	CCB Kenetik p/b Levine Law	3:59:08	+8:01						
26	236	SONNEMANN, Lyllie*	CCB Kenetik p/b Levine Law	3:59:15	+8:08						
27	241	GILBERT, Annie	Monarch Racing	3:59:15	"						
28	262	LAFLAMME, Camille	SpeedBlock-Terún Elite	3:59:16	+8:09						
29	223	MITCHELL, Charlotte	Analog Racing Team	3:59:52	+8:45						
30	191	BIRD, Sara	Valkyr Cycling	3:59:54	+8:47						
31	272	FORTIER, Abigaël*	TaG Cycling Race Team	3:59:56	+8:49						
32	284	MUSGRAVE, Kaya*	Team S&M CX	3:59:56	"						
33	175	BEEBE, Tessa*	BCID	3:59:57	+8:50						
34	185	SIMS, Sierra	SOUTH	3:59:58	+8:51						
35	293	DRIEDGER, Emily	The Cyclery Racing	4:00:03	+8:56						
36	255	THACKRAY, Sarah	Red Truck Racing p/b Mosaic	4:00:13	+9:06						
37	244	LUO, Elisa	Monarch Racing	4:00:35	+9:28						
38	245	MERK, Helena	Monarch Racing	4:00:36	+9:29						
39	173	KENNEDY, Shannon	BCID	4:00:50	+9:43						
40	193	KIKAWA, Caroline	Valkyr Cycling	4:01:05	+9:58						
41	252	AYROUD, Kathryn	Red Truck Racing p/b Mosaic	4:02:00	+10:53						
42	256	THOMSON, Ashton*	Red Truck Racing p/b Mosaic	4:05:32	+14:25						
43	285	SACCIO, Zoe	Team S&M CX	4:05:48	+14:41						
44	253	BARRACLOUGH, Ngairé	Red Truck Racing p/b Mosaic	4:06:16	+15:09						
45	182	HALAMEK, Stephanie	SOUTH	4:06:41	+15:34						
46	171	WARD, Jennifer	BCID	4:07:10	+16:03						
47	233	GRIER, Ella*	CCB Kenetik p/b Levine Law	4:07:15	+16:08						
48	242	FERREIRA, Claudia	Monarch Racing	4:07:48	+16:41						
49	246	NOTTINGHAM, Grace	Monarch Racing	4:09:11	+18:04						
50	234	HAYES, Sabrina	CCB Kenetik p/b Levine Law	4:09:33	+18:26						
51	194	LOVELL, Marissa	Valkyr Cycling	4:10:12	+19:05						
52	222	GELINEAU, Sophie	Analog Racing Team	4:11:04	+19:57						
53	221	LYND, Mikayla	Analog Racing Team	4:11:19	+20:12						
54	281	WRYE-SIMPSON, Brenna	Team S&M CX	4:26:02	+34:55						
55	283	LUCIE, Kimberly	Team S&M CX	4:26:02	"						
56	195	MOSER, Natalie*	Valkyr Cycling	4:27:46	+36:39						
57	192	ALBRIGHT, Bristol*	Valkyr Cycling	4:27:50	+36:43						
58	296	FANGEAT, Alex*	The Cyclery Racing	4:27:52	+36:45						
59	291	TAYLOR, Kristen*	The Cyclery Racing	4:30:01	+38:54						

2026 Tour De Bloom Stage: 2

Still Properties Waterville Road Race

May 15, 2026

Points Classification

STAGE CLASSIFICATION

RK	BIB	NAME	NAT	TEAM	POINTS
STAGE 2 SPRINT1					
1	211	MEJIAS GARCIA, Marlies	USA	Virginia's Bl...	10
2	236	SONNEMANN, Lyllie*	USA	CCB Keneti...	6
3	216	CUMMINS, Olivia	USA	Virginia's Bl...	4
RACE FINISH					
1	211	MEJIAS GARCIA, Marlies	USA	Virginia's Bl...	15
2	216	CUMMINS, Olivia	USA	Virginia's Bl...	12
3	215	SABO, Ella*	USA	Virginia's Bl...	9
4	212	EHRlich, Emily	USA	Virginia's Bl...	7
5	204	ARLANDSON, Grace	USA	Aegis x Lea...	5
6	264	PAYER, Kira	USA	SpeedBlock...	3
7	203	CHAPMAN, Jamie	USA	Aegis x Lea...	2
8	292	BAKER, Dylan*	USA	The Cyclery...	1

GENERAL CLASSIFICATION

RK	BIB	NAME	NAT	TEAM	POINTS
1	211	MEJIAS GARCIA, Marlies	USA	Virginia's Bl...	27
2	216	CUMMINS, Olivia	USA	Virginia's Bl...	16
3	213	GILBERT, Emmi	USA	Virginia's Bl...	15
4	204	ARLANDSON, Grace	USA	Aegis x Lea...	12
5	214	HICKS, Anna	USA	Virginia's Bl...	12
6	215	SABO, Ella*	USA	Virginia's Bl...	9
7	201	HANEL, Kylee*	USA	Aegis x Lea...	9
8	203	CHAPMAN, Jamie	USA	Aegis x Lea...	7
9	212	EHRlich, Emily	USA	Virginia's Bl...	7
10	236	SONNEMANN, Lyllie*	USA	CCB Keneti...	6
11	264	PAYER, Kira	USA	SpeedBlock...	4
12	194	LOVELL, Marissa	USA	Valkyr Cycli...	3
13	292	BAKER, Dylan*	USA	The Cyclery...	1

2026 Tour De Bloom Stage: 2

Still Properties Waterville Road Race

May 15, 2026

Mountains Classification

STAGE CLASSIFICATION

RK	BIB	NAME	NAT	TEAM	POINTS
STAGE 2 QOM 1					
1	203	CHAPMAN, Jamie	USA	Aegis x Lea...	5
2	204	ARLANDSON, Grace	USA	Aegis x Lea...	3
3	214	HICKS, Anna	USA	Virginia's Bl...	2
4	216	CUMMINS, Olivia	USA	Virginia's Bl...	1
STAGE 2 QOM 2					
1	214	HICKS, Anna	USA	Virginia's Bl...	5
2	204	ARLANDSON, Grace	USA	Aegis x Lea...	3
3	212	EHRlich, Emily	USA	Virginia's Bl...	2
4	203	CHAPMAN, Jamie	USA	Aegis x Lea...	1

GENERAL CLASSIFICATION

RK	BIB	NAME	NAT	TEAM	POINTS
1	214	HICKS, Anna	USA	Virginia's Bl...	12
2	204	ARLANDSON, Grace	USA	Aegis x Lea...	8
3	213	GILBERT, Emmi	USA	Virginia's Bl...	7
4	203	CHAPMAN, Jamie	USA	Aegis x Lea...	7
5	201	HANEL, Kylee*	USA	Aegis x Lea...	3
6	212	EHRlich, Emily	USA	Virginia's Bl...	2
7	216	CUMMINS, Olivia	USA	Virginia's Bl...	1

2026 Tour De Bloom Stage: 2

Still Properties Waterville Road Race

May 15, 2026

Young Rider Classification

Stage Classification

Stage Distance: 121.3 km

General Classification

Cumulative Distance: 137.9 km

Rk	Bib	Name	B	P	Time	Gap	Rk	Bib	Name	Time	Gap
1	215	SABO, Ella*	4		3:27:35	--	1	292	BAKER, Dylan*	3:53:20	"
2	292	BAKER, Dylan*			3:27:52	+17	2	215	SABO, Ella*	3:54:46	+1:26
3	236	SONNEMANN, Lyllie*	4		3:31:03	+3:28	3	201	HANEL, Kylee*	3:56:40	+3:20
4	272	FORTIER, Abigaël*			3:33:19	+5:44	4	232	EDWARDS, Lily*	3:57:27	+4:07
5	271	ERVIN-ARAMBARRI, Amaia*			3:33:19	"	5	274	WINCHELL, Eleanor*	3:58:25	+5:05
6	284	MUSGRAVE, Kaya*			3:33:19	"	6	271	ERVIN-ARAMBARRI, Amaia*	3:58:57	+5:37
7	175	BEEBE, Tessa*			3:33:19	"	7	261	AGGELER, Lauren*	3:59:07	+5:47
8	232	EDWARDS, Lily*			3:33:19	"	8	231	BRENNEMAN, Ella*	3:59:08	+5:48
9	261	AGGELER, Lauren*			3:33:19	"	9	236	SONNEMANN, Lyllie*	3:59:15	+5:55
10	274	WINCHELL, Eleanor*			3:33:19	"	10	272	FORTIER, Abigaël*	3:59:56	+6:36
11	231	BRENNEMAN, Ella*			3:33:19	"	11	284	MUSGRAVE, Kaya*	3:59:56	"
12	201	HANEL, Kylee*			3:33:19	"	12	175	BEEBE, Tessa*	3:59:57	+6:37
13	256	THOMSON, Ashton*			3:37:42	+10:07	13	256	THOMSON, Ashton*	4:05:32	+12:12
14	233	GRIER, Ella*			3:40:00	+12:25	14	233	GRIER, Ella*	4:07:15	+13:55
15	296	FANGEAT, Alex*			3:57:57	+30:22	15	195	MOSER, Natalie*	4:27:46	+34:26
16	291	TAYLOR, Kristen*			3:59:46	+32:11	16	192	ALBRIGHT, Bristol*	4:27:50	+34:30
17	192	ALBRIGHT, Bristol*			4:00:22	+32:47	17	296	FANGEAT, Alex*	4:27:52	+34:32
18	195	MOSER, Natalie*			4:01:22	+33:47	18	291	TAYLOR, Kristen*	4:30:01	+36:41
19	273	MONTRICHARD, Vanessa*			4:02:29	+34:54	19	273	MONTRICHARD, Vanessa*	4:34:35	+41:15

2026 Tour De Bloom Stage: 2

Still Properties Waterville Road Race

May 15, 2026

Team Results

Stage Classification
Stage Distance: 121.3 km

General Classification
Cumulative Distance: 137.9 km

Rk	Team (Stage)	Time	Gap	Rk	Team (GC)	Time	Gap
1	Virginia's Blue Ridge TWENTY28 211 / 216 / 215	10:22:45	--	1	Virginia's Blue Ridge TWENTY28	11:32:39	--
2	Aegis x Leaders of Enchantment 204 / 203 / 205	10:26:25	+3:40	2	Aegis x Leaders of Enchantment	11:36:55	+4:16
3	SpeedBlock-Terún Elite 264 / 262 / 266	10:34:19	+11:34	3	SpeedBlock-Terún Elite	11:48:05	+15:26
4	The Cyclery Racing 292 / 295 / 293	10:34:30	+11:45	4	The Cyclery Racing	11:52:23	+19:44
5	SOUTH 181 / 185 / 183	10:37:41	+14:56	5	CCB Kenetik p/b Levine Law Group	11:54:53	+22:14
6	CCB Kenetik p/b Levine Law Group 236 / 232 / 231	10:37:41	+14:56	6	SOUTH	11:55:37	+22:58
7	TaG Cycling Race Team 272 / 271 / 274	10:39:57	+17:12	7	Monarch Racing	11:57:11	+24:32
8	Monarch Racing 245 / 241 / 244	10:39:57	+17:12	8	TaG Cycling Race Team	11:57:18	+24:39
9	Red Truck Racing p/b Mosaic Homes 252 / 255 / 253	10:44:31	+21:46	9	Team S&M CX	12:03:07	+30:28
10	BCID 175 / 173 / 171	10:45:11	+22:26	10	BCID	12:06:59	+34:20
11	Team S&M CX 284 / 282 / 285	10:45:34	+22:49	11	Red Truck Racing p/b Mosaic Homes	12:07:38	+34:59
12	Analog Racing Team 223 / 224 / 222	10:46:38	+23:53	12	Analog Racing Team	12:08:12	+35:33
13	Valkyr Cycling 193 / 191 / 194	10:53:04	+30:19	13	Valkyr Cycling	12:09:49	+37:10

2026 Tour De Bloom Stage: 3

Rookard Pools Twilight Downtown Crit

May 16, 2026

Caravan Order

- 1 Virginia's Blue Ridge TWENTY28
- 2 Aegis x Leaders of Enchantment
- 3 Monarch Racing
- 4 SpeedBlock-Terún Elite
- 5 Analog Racing Team
- 6 CCB Kenetik p/b Levine Law Group
- 7 TaG Cycling Race Team
- 8 Red Truck Racing p/b Mosaic Homes

2026 Tour De Bloom Stage: 3

Rookard Pools Twilight Downtown Crit

May 16, 2026

AEG	201 +5:33 HANEL* 32nd	202 +44:23 BAKER 62nd	203 +0:13 CHAPMAN 7th	204 -- ARLANDSON 5th	205 +6:18 LAWSON 10th	206 RHYNE DNS2
VBR	211 +0:13 MEJIAS GARCIA 1st	212 +1:40 EHRlich 4th	213 +4:51 GILBERT 21st	214 +5:10 HICKS 22nd	215 +3:39 SABO* 3rd	216 +2:17 CUMMINS 2nd
ANA	221 +20:12 LYND 51st	222 +19:57 GELINEAU 46th	223 +8:45 MITCHELL 34th	224 +6:18 PHAM 39th	225 +42:17 TROYER 60th	
CCB	231 +8:01 BRENNEMAN* 31st	232 +6:20 EDWARDS* 25th	233 +16:08 GRIER* 49th	234 +18:26 HAYES 50th	235 RUSCH DNS1	236 +8:08 SONNEMANN* 9th
MON	241 +8:08 GILBERT 36th	242 +16:41 FERREIRA 48th	243 +43:37 GIESKE 63rd	244 +9:28 LUO 40th	245 +9:29 MERK 35th	246 +18:04 NOTTINGHAM 52nd
RTR	251 +55:22 DRESSLER 64th	252 +10:53 AYROUD 19th	253 +15:09 BARRACLOUGH 42nd	254 DREWS DNS1	255 +9:06 THACKRAY 41st	256 +14:25 THOMSON* 43rd
STE	261 +8:00 AGGELER* 26th	262 +8:09 LAFLAMME 13th	263 +6:48 MINAGAWA 33rd	264 +0:36 PAYER 6th	265 +7:20 PELLERIN 24th	266 +7:43 SNOVER 14th
TAG	271 +7:50 ERVIN-ARAMBARRI* 15th	272 +8:49 FORTIER* 12th	273 +43:28 MONTRICHARD* 61st	274 +7:18 WINCHELL* 29th	275 ENTRY* DNS1	
S&M	281 +34:55 WRYE-SIMPSON 54th	282 +6:16 BETUEL 30th	283 +34:55 LUCIE 55th	284 +8:49 MUSGRAVE* 16th	285 +14:41 SACCIO 45th	
TCR	291 +38:54 TAYLOR* 57th	292 +2:13 BAKER* 8th	293 +8:56 DRIEDGER 37th	294 RAUWERDA DNS1	295 +7:53 SCOTT 23rd	296 +36:45 FANGEAT* 56th
BCID	171 +16:03 WARD 44th	172 PETERSEN DNF2	173 +9:43 KENNEDY 38th	174 YOUMANS DNS2	175 +8:50 BEEBE* 18th	
STH	181 +6:51 HOWDEN 11th	182 +15:34 HALAMEK 47th	183 +6:48 REEVE 27th	184 MAUREY DNS1	185 +8:51 SIMS 20th	
VAL	191 +8:47 BIRD 28th	192 +36:43 ALBRIGHT* 58th	193 +9:58 KIKAWA 17th	194 +19:05 LOVELL 53rd	195 +36:39 MOSER* 59th	

2026 Tour De Bloom Stage: 2

Still Properties Waterville Road Race

May 15, 2026

Start List

BCID

BCID				
171	WARD, Jennifer	BC	44th	+16:03
172	PETERSEN, Jen	BC	DNF2	
173	KENNEDY, Shannon	BC	38th	+9:43
174	YOUMANS, Sara	ID	DNS2	
175	BEEBE, Tessa*	ID	18th	+8:50

STH

SOUTH

181	HOWDEN, Florence	NC	11th	+6:51
182	HALAMEK, Stephanie	NY	47th	+15:34
183	REEVE, Olivia	TX	27th	+6:48
184	MAUREY, Olivia	CO	DNS1	
185	SIMS, Sierra	TN	20th	+8:51

VAL

Valkyr Cycling

191	BIRD, Sara	OR	28th	+8:47
192	ALBRIGHT, Bristol*	NC	58th	+36:43
193	KIKAWA, Caroline	WA	17th	+9:58
194	LOVELL, Marissa	OR	53rd	+19:05
195	MOSEY, Natalie*	OR	59th	+36:39

AEG

Aegis x Leaders of Enchantment

201	HANEL, Kylee*	OR	32nd	+5:33
202	BAKER, Ajay	IN	62nd	+44:23
203	CHAPMAN, Jamie	CA	7th	+0:13
204	ARLANDSON, Grace	CO	5th	--
205	LAWSON, Mairén	IN	10th	+6:18
206	RHYNE, Kate	TX	DNS2	

VBR

Virginia's Blue Ridge TWENTY28

211	MEJIAS GARCIA, Marlies	UNK	1st	+0:13
212	EHRlich, Emily	SC	4th	+1:40
213	GILBERT, Emmi	AZ	21st	+4:51
214	HICKS, Anna	CO	22nd	+5:10
215	SABO, Ella*	CA	3rd	+3:39
216	CUMMINS, Olivia	CO	2nd	+2:16

ANA

Analog Racing Team

221	LYND, Mikayla	BC	51st	+20:12
222	GELINEAU, Sophie	SK	46th	+19:57
223	MITCHELL, Charlotte	BC	34th	+8:45
224	PHAM, Cynthia	BC	39th	+6:18
225	TROYER, Pamela	BC	60th	+42:17

CCB

CCB Kenetik p/b Levine Law Group

231	BRENNEMAN, Ella*	PA	31st	+8:01
232	EDWARDS, Lily*	DC	25th	+6:20
233	GRIER, Ella*	VA	49th	+16:08
234	HAYES, Sabrina	CO	50th	+18:26
235	RUSCH, Katherine	RI	DNS1	
236	SONNEMANN, Lyllie*	WI	9th	+8:08

MON

Monarch Racing

241	GILBERT, Annie	DC	36th	+8:08
242	FERREIRA, Claudia	KY	48th	+16:41
243	GIESKE, Meredith	KY	63rd	+43:37
244	LUO, Elisa	CA	40th	+9:28
245	MERK, Helena	CA	35th	+9:29
246	NOTTINGHAM, Grace	VA	52nd	+18:04

RTR

Red Truck Racing p/b Mosaic Homes

251	DRESSLER, Emma	BC	64th	+55:22
252	AYROUD, Kathryn	BC	19th	+10:53
253	BARRACLOUGH, Ngairé	AB	42nd	+15:09
254	DREWS, Abigail-Katrina	BC	DNS1	
255	THACKRAY, Sarah	BC	41st	+9:06
256	THOMSON, Ashton*	AB	43rd	+14:25

STE

SpeedBlock-Terún Elite

261	AGGELER, Lauren*	CO	26th	+8:00
262	LAFAMME, Camille	QC	13th	+8:09
263	MINAGAWA, Minori	OH	33rd	+6:48
264	PAYER, Kira	CO	6th	+0:36
265	PELLERIN, Skye	UNK	24th	+7:20
266	SNOVER, Ellexi	WA	14th	+7:43

TAG

TaG Cycling Race Team

271	ERVIN-ARAMBARRI, Amaia*	AB	15th	+7:50
272	FORTIER, Abigaél*	QC	12th	+8:49
273	MONTRICHARD, Vanessa*	ON	61st	+43:28
274	WINCHELL, Eleanor*	BC	29th	+7:18
275	ENTRY, Pending*	--	DNS1	

S&M

Team S&M CX

281	WRYE-SIMPSON, Brenna	OR	54th	+34:55
282	BETUEL, Emma	NY	30th	+6:16
283	LUCIE, Kimberly	AZ	55th	+34:55
284	MUSGRAVE, Kaya*	CO	16th	+8:49
285	SACCIO, Zoe	OR	45th	+14:41

TCR

The Cyclery Racing

291	TAYLOR, Kristen*	ON	57th	+38:54
292	BAKER, Dylan*	ON	8th	+2:13
293	DRIEDGER, Emily	ON	37th	+8:56
294	RAUWERDA, Kaitlyn	ON	DNS1	
295	SCOTT, Annie	AB	23rd	+7:53
296	FANGEAT, Alex*		56th	+36:45

2026 Tour De Bloom Sponsors

