



Race Programme / Technical Guide CXNE 2023 /24

Round 9 Promoted by :

Tyneside Vagabonds

Sunday 10th December

Thorneyford Farm, Kirkley, Ponteland, NE20 0AJ

Car Parking

Parking on Sunday will be limited. The overflow field is far too wet to use. Please park sensibly and considerately. If you are staying all day and don't mind getting blocked in use the area of the car park near the old black barn roof in the far right corner of the car park as you drive in. There will be marshals in the car park, be nice to them.



Note – No Jet washing allowed in Car Parking

Registration

All CXNE Events are now Online Entry only. During the online entry process you are prompted to read and accept the British Cycling Events T&C

www.britishcycling.org.uk/article/Rider-Ts-and-Cs-0

Therefore all you need to do is go to Registration and pick up your number.

If you click this link on the Friday Evening before the Sunday race, you able to view the Participants page which will give a full list of all the riders, here you will be able to check your race details. If any of the details are incorrect, please come to the Chip Timing tent and let us know, we can correct them for the future.

<https://my.raceresult.com/groups/5562/>

Registration will normally be open from 9:00am, located at the pop up tent next to the commentary tent. Please collect an envelope that will have your details on the outside and your number inside, the details on the envelope will be your allocated Bib Number, Your Name, The Race you have been entered into, Your Category, Please check the details fully to ensure you are handed the correct envelope, your number will have a transponder chip attached to the back. Please do not bend the number where the chip is attached, please do not damage the transponder.

Note: *Registration closes 15 mins before the start of each race*

Remember, you'll need to bring some safety pins to attach your number.



Your Race Number must be pinned to bottom of race Jersey or if you have a NoPinz pouch that is also acceptable.

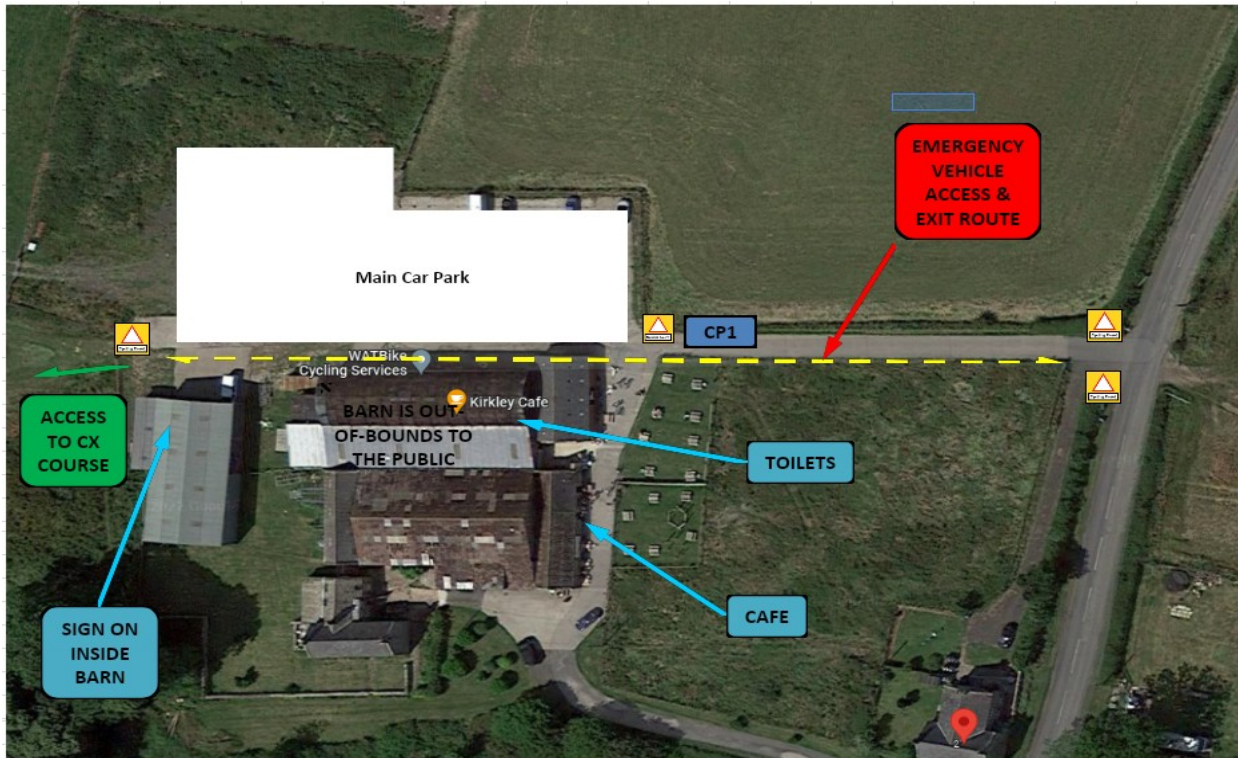
Note you must not bend or fold your race number or stick pins through the transponder.

Remember, after your race please take off your number immediately and place in the collection bag, which will be situated just after the finish line.

Important Note – We need all the numbers back so we can retrieve the Transponder Chip for future events, please do not take your number home after the event or dispose of it.

Toilets & Facilities

Toilets are available on site, located behind the Barn Gym
Please keep the toilets as clean as practicably possible, think of the next person !

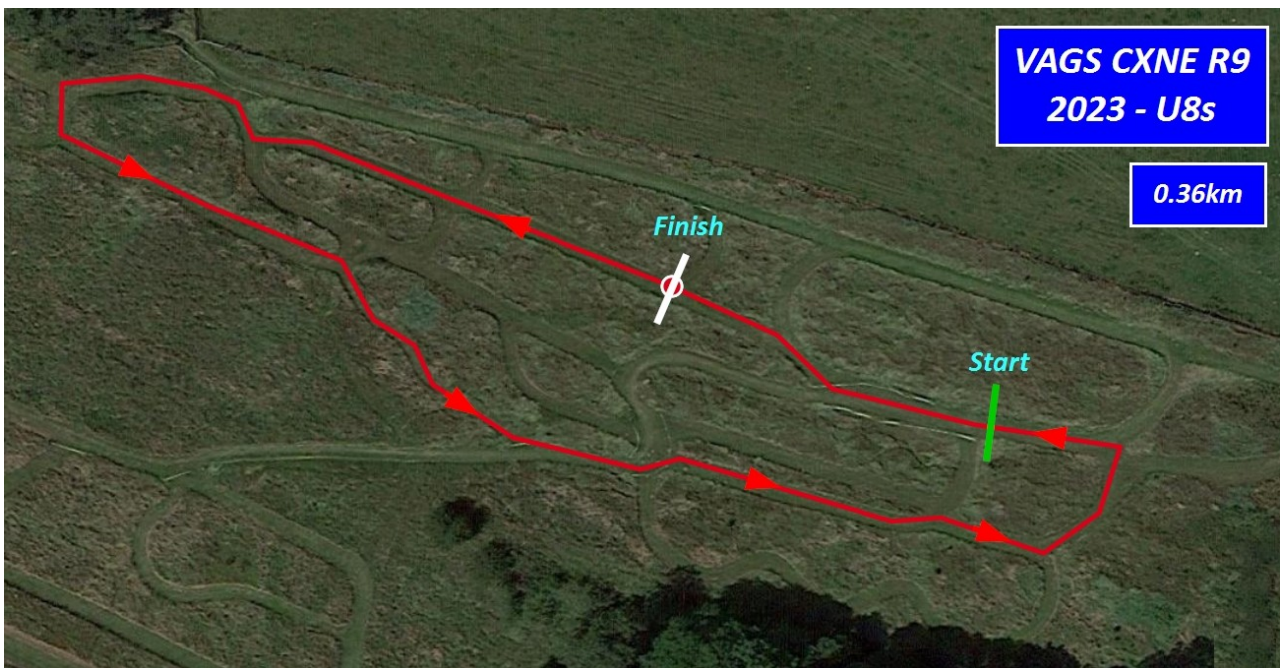


Refreshments

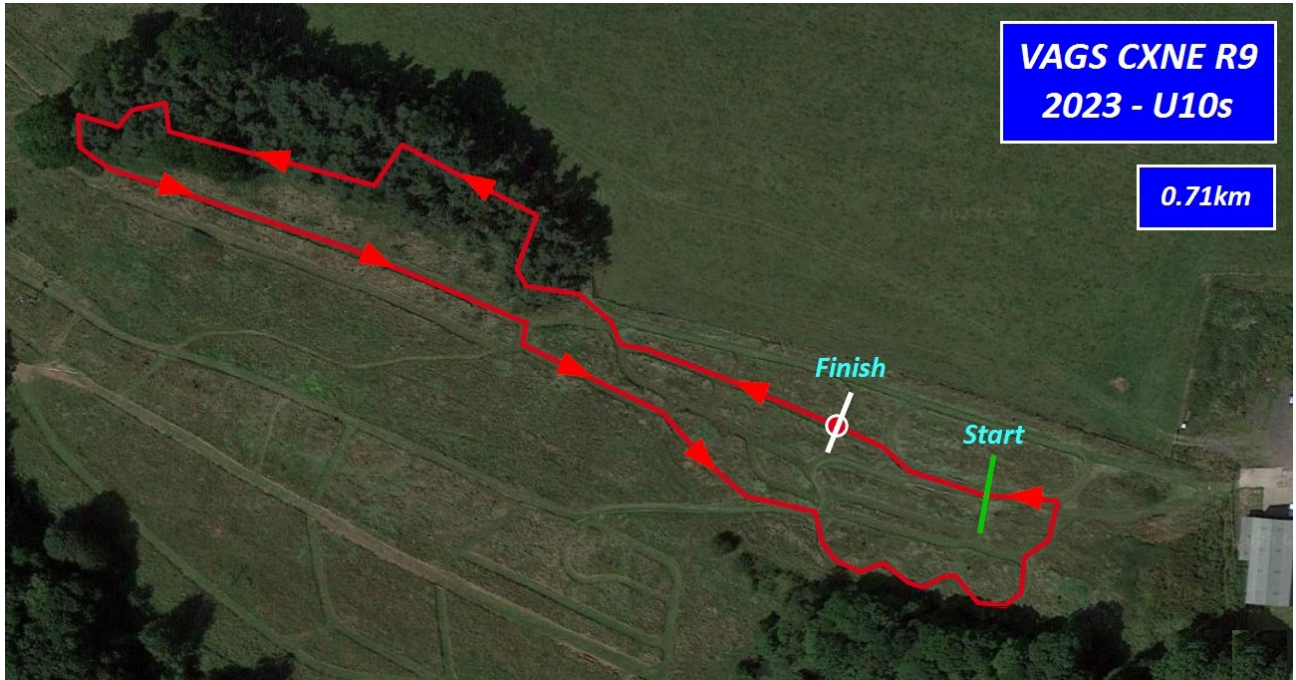
The Cafe will be open, serving a range of hot food and drinks

The Courses

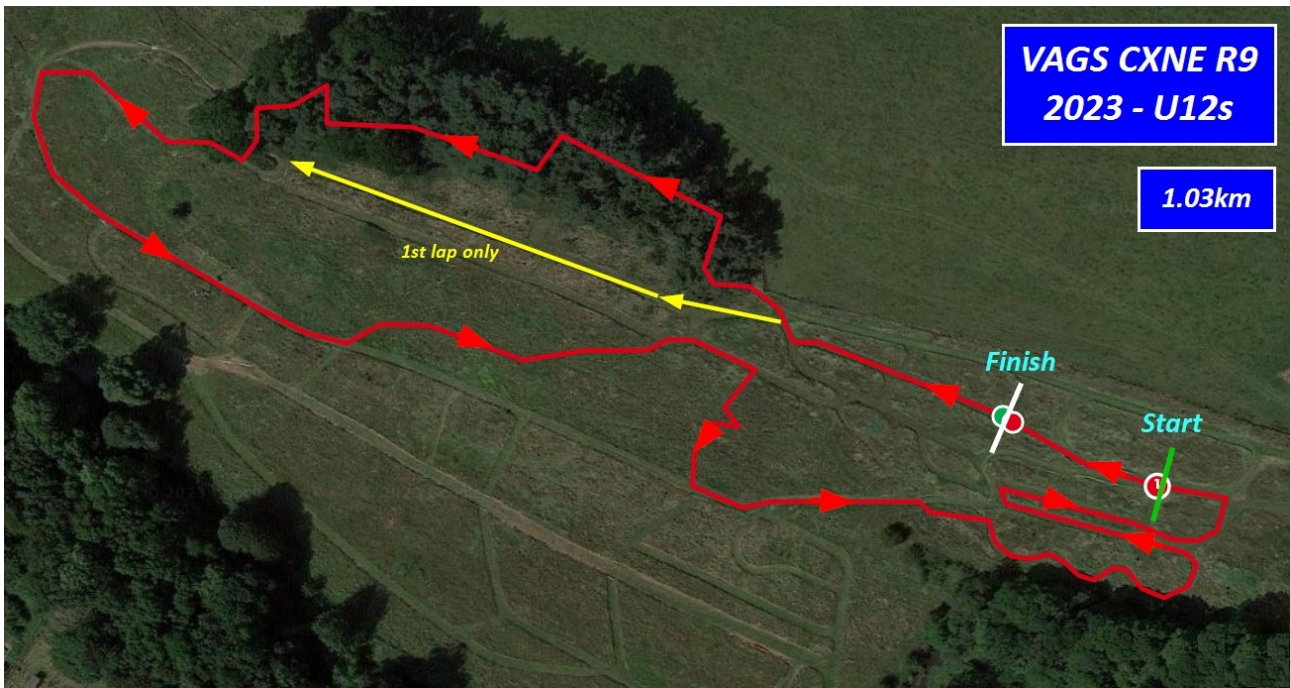
The U8 Course



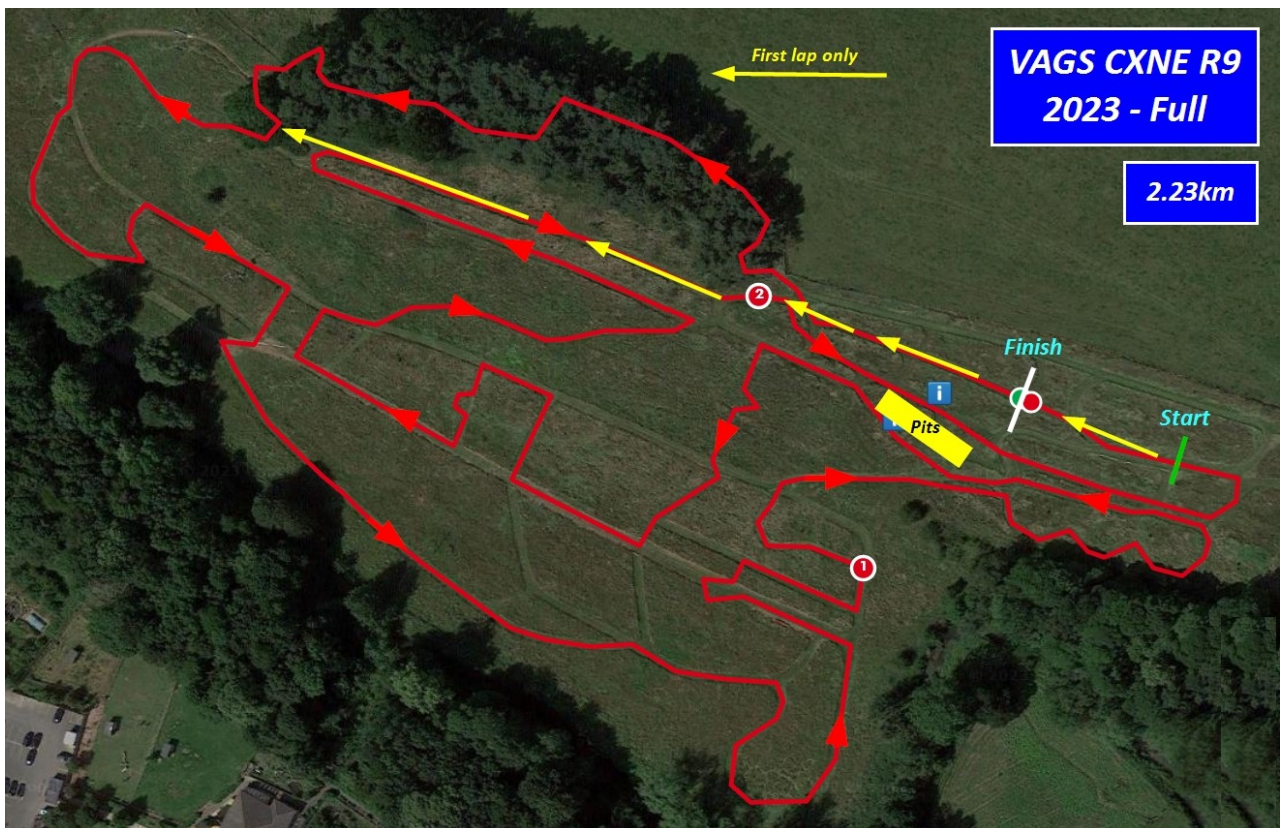
The U10 Course



The U12 Course



The Vets & Senior Course



Course Practice

Generally the course will be open for practice from 9:30 to 10:25 and 13:20 to 14:05. You must not enter the course in the morning until it has been officially passed off by the acting Chief Commissaire. It will be announced over the PA when the course is opened.

Important Note – Helmets

CXNE have a strict Venue rule that a Cycle Helmet must be worn at times when riding your bike, competing or spectating, riding to the Registration, course practice, warming up as well as racing. If you are on a bike at a CXNE Venue you will need to wear your Cycle Helmet. Failure to do so, you will be asked to leave the Venue or if racing on that day potentially disqualified.

Race Day Program - Races and waves

Race	Title	Description	Duration (mins)	Wave	Points group	Start time
1	Race 1	Junior Men, V50+ Men, Women	40	1 - MJ	1	10:30:00
				2 - MV50+	2	10:31:00
				3 - Women	3	10:32:00
2	Race 2	Youth	30	1 - U16	4	11:30:00
				2 - U14	5	11:31:00
3	Race 3	Kids U8	10	1 - U8	6	12:20:00
4	Race 4	Kids U10	10	1 - U10	7	12:40:00
5	Race 5	Kids U12	15	1 - U12	8	13:00:00
6	Race 6	Senior Men, V40 Men	50	1 - MS	9	14:15:00
				2 - MV40	10	14:17:00

Gridding

Only Youth category and above will be gridded. U8 / U10 / U12 categories, under BC rules are participation focused races and will not be gridded.

Please make yourself ready and available at the Start / Gridding area 5 mins before the scheduled time of your race. Unless program change announcements are made.

For the first 3 rounds, gridding positions are dictated by your previous seasons league positions / points. (2022/23). Then after the 3rd round gridding positions are dictated by your current league position. Only the Commissaire on the day has the authority to use his or her discretion to overrule or modify the gridding sheet.

If you are visiting the North East and not a frequent participant of the CXNE league and feel strongly that you should be, or need to be gridded, you must to put your case forward to the acting Commissaire before the gridding process is started.

If you fail to present yourself when called forward for gridding, you will be asked to join at the back of the gridding.

Age Groups and categories

AgeMin	AgeMax	AgeGroup	Description	min_DOB	max_DOB
1	7	U8	Under 8	2016-01-01	2022-12-31
8	9	U10	Under 10	2014-01-01	2015-12-31
10	11	U12	Under 12	2012-01-01	2013-12-31
12	13	U14	Under 14	2010-01-01	2011-12-31
14	15	U16	Under 16	2008-01-01	2009-12-31
16	17	J	Junior	2006-01-01	2007-12-31
18	39	S	Senior	1984-01-01	2005-12-31
40	49	V40	Vet 40	1974-01-01	1983-12-31
50	59	V50	Vet 50	1964-01-01	1973-12-31
60	69	V60	Vet 60	1954-01-01	1963-12-31
70	99	V70	Vet 70	1924-01-01	1953-12-31

League points groups / competitions

Group	Title	Categories
1	Men: Juniors	MJ
2	Men: V50+	MV50, MV60, MV70
3	Women: Juniors, Seniors and Vets	FJ, FS, FV40, FV50, FV60, FV70
4	Youth: U16 Girls and Boys	MU16, FU16
5	Youth: U14 Girls and Boys	MU14, FU14
6	Kids: U8 Girls and Boys	MU8, FU8
7	Kids: U10 Girls and Boys	MU10, FU10
8	Kids: U12 Girls and Boys	MU12, FU12
9	Men: Seniors	MS
10	Men: V40	MV40

Notes

The system allocates a maximum of 200 points by default to first place in a group. If a rider is DNF, no points are allocated for that rider. If the automatically generated category for a rider (based on DOB) does not match any category in the Race/Wave, no points are allocated for that rider.

Riders competing for points in the same points group must be in the same Race and Wave, and have the same start time.

Where a Race has multiple points groups (i.e. Waves), each Wave can be started at an offset time behind the start time. The offset time is subtracted from the final chip timing times to create final times for all riders in that Wave.

Dropping out of The Race

If you suffer a “mechanical” (your bike breaks) or you are physically struggling and need to stop, you should leave the course by crossing the marking tape wherever safe to do so and make your way back to the start/finish area. Don't go anywhere near the timing gantry on the finish line, as you may trigger off the timing system. Inform the commissioner you've withdrawn (the commissioner is the person in charge of each race) if you can't find him/her don't worry. Please inform someone at Registration or Jeff at the chip timing tent.

Podium Positions

Immediately after each race there will be a Podium Presentation, if you are in the top three, please make yourself available for the podium presentation. Do not disappear, whatever the weather, we have a very tight race day schedule and do not have time to go chasing after people for the Presentations. If you fail to turn up when called for, you will forfeit any prizes or photo opportunities

Results

We have a very sophisticated and clever chip timing system, providing we don't have any unforeseen issues, you will be able access the results immediately after your race on any mobile device that has internet access.

All our race results will be Live on the day. Therefore if you have supporters, friends, family anywhere in the World, or if after you have raced and you want to keep up with the next race you can via the link :- <https://my.raceresult.com/253986/>

Race Day Commissaire

Chief Comm :- Joanna Lally

Assistant Comms:- Kate Smith / Marty McTavy (Trainee)

Race Organiser

Graham Stobbs

Email:- grahamstobbs@gmail.com Mobile: +44 (0) 7801 564 870

First Aid Provider & Contact

Phone:+44 (0113) 4505335 Mobile:+44 (0)7806 680660

Email: lewis@lambdamedical.co.uk Web: www.lambdamedical.co.uk

Address:

Lambda Medical Ltd

32a Lucas Court, Leeds, LS6 2TG

Nearest Emergency Hospital

Northumbria Emergency Care Hospital

Northumbria Way, Cramlington, Northumberland, NE23 6NZ

Enjoy your racing, respect the marshals and officials and be polite to others.